

# 28

## SLIDING SYSTEM

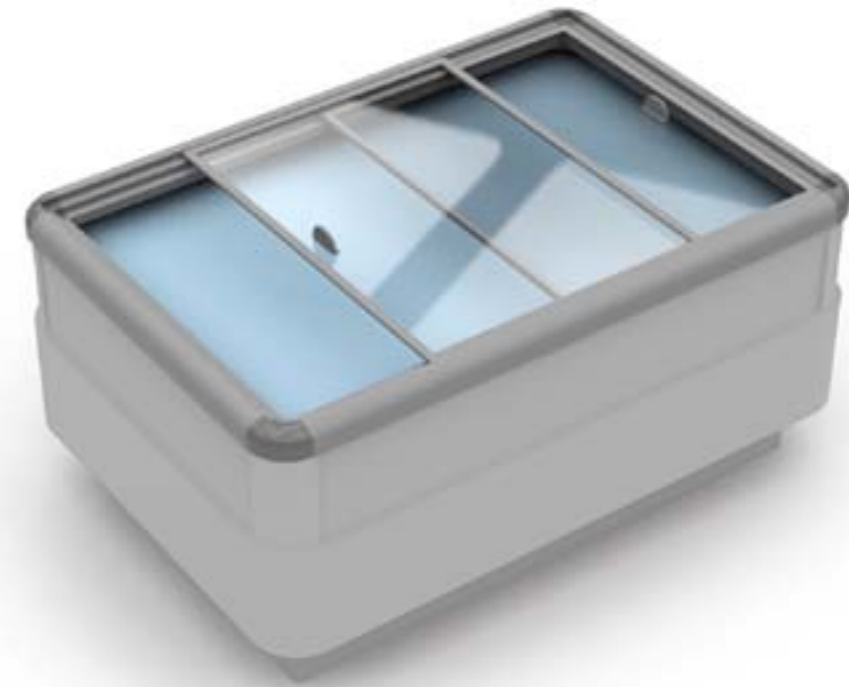
New profiles for covering refrigerated cabinets. With easy installation they can ensure hermetic closure and energy save.

Nuova linea di profili per la copertura di banchi frigo. Di facile installazione garantisce ermeticità e risparmio energetico.

Nouvelle gamme de profilés pour la couverture de meubles frigorifiques. Très facile à installer, elle garantit une fermeture hermétique et une économie d'énergie importantes.

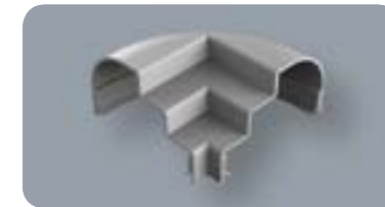
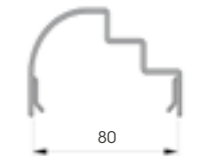


### FLAT



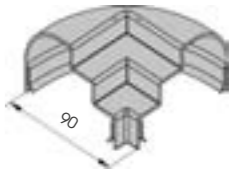
#### FLP

Length **4.000 mm**  
Packing **to be defined**  
Colour **B**



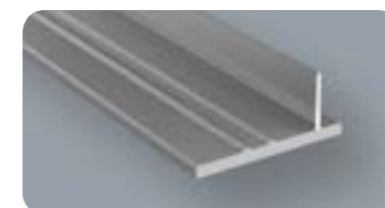
#### FLC

Length **4.000 mm**  
Packing **to be defined**  
Colour **B**



#### SSB

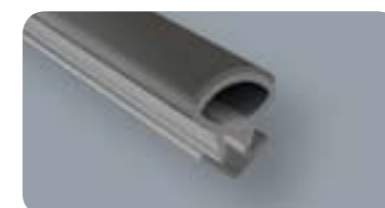
Length **4.000 mm**  
Packing **to be defined**  
Colour **B transparent**



#### SSE

With double-sided tape

Length **4.000 mm**  
Packing **to be defined**  
Colour **B transparent**



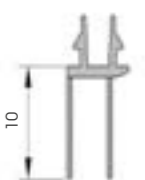
#### UG

Length **4.000 mm**  
Packing **to be defined**  
Colour **B transparent**

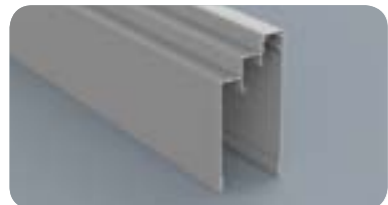
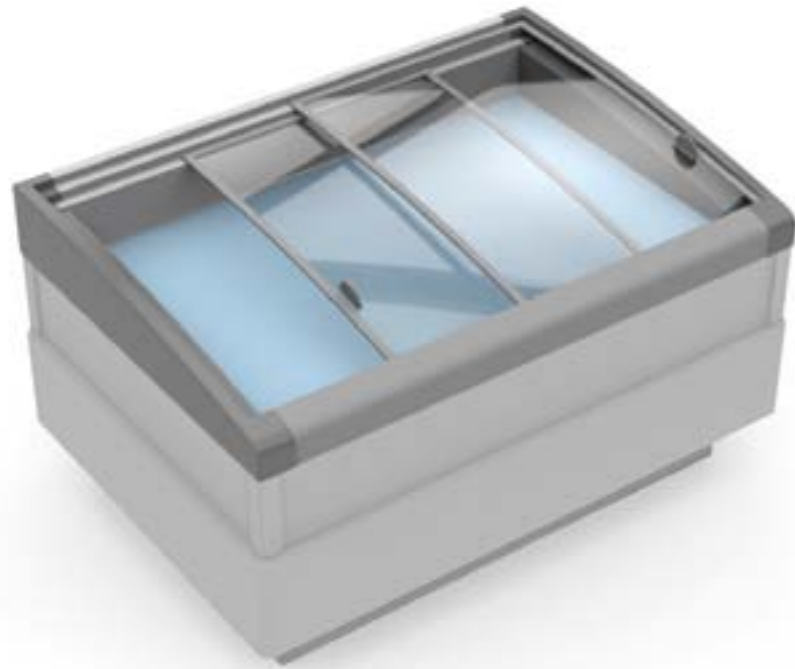


#### DG

Length **4.000 mm**  
Packing **to be defined**  
Colour **B transparent**



**CURVED**



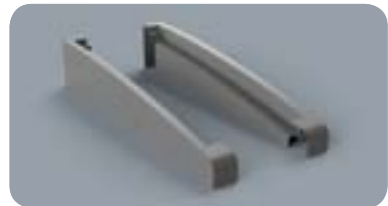
**CUB**

Length **4.000 mm**  
Packing **to be defined**  
Colour **B transparent**



**CUF**

Length **4.000 mm**  
Packing **to be defined**  
Colour **B transparent**



**CUS SX / DX**

Packing **to be defined**  
Colour **B transparent**



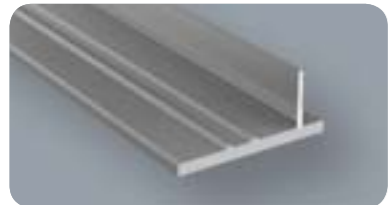
**CUH**

Packing **to be defined**  
Colour **B transparent**



**SSB**

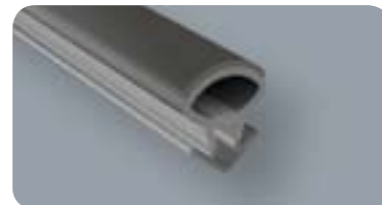
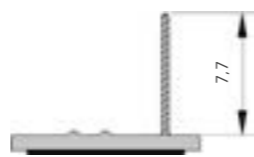
Length **4.000 mm**  
Packing **to be defined**  
Colour **B transparent**



**SSE**

With double-sided tape

Length **4.000 mm**  
Packing **to be defined**  
Colour **B transparent**



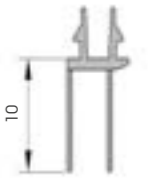
**UG**

Length **4.000 mm**  
Packing **to be defined**  
Colour **B transparent**

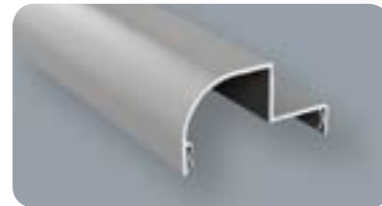
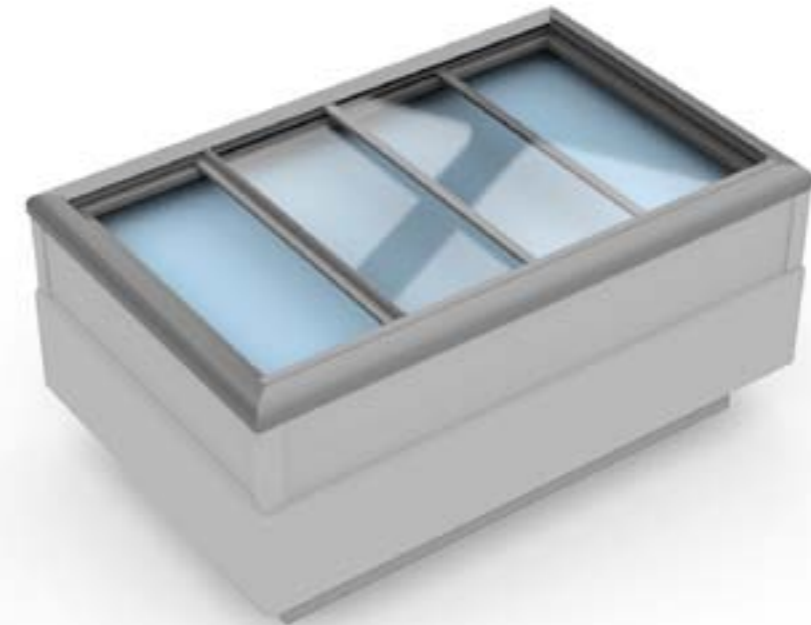


**DG**

Length **4.000 mm**  
Packing **to be defined**  
Colour **B transparent**

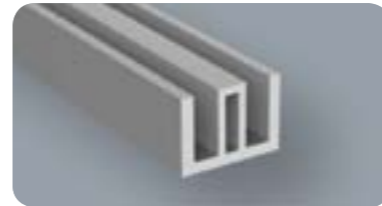
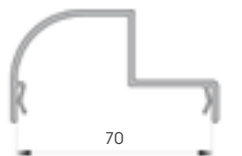


**RAIL**



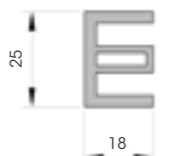
**RAP**

Length **4.000 mm**  
Packing **to be defined**  
Colour **K**



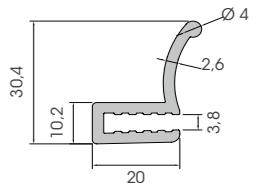
**RAEP**

Length **4.000 mm**  
Packing **to be defined**  
Colour **K**



**HGF**

Length **4.000 mm**  
Packing **35 pz / box**  
Colour **K**



**GF**

Length **4.000 mm**  
Packing **35 pz / box**  
Colour **K**

