



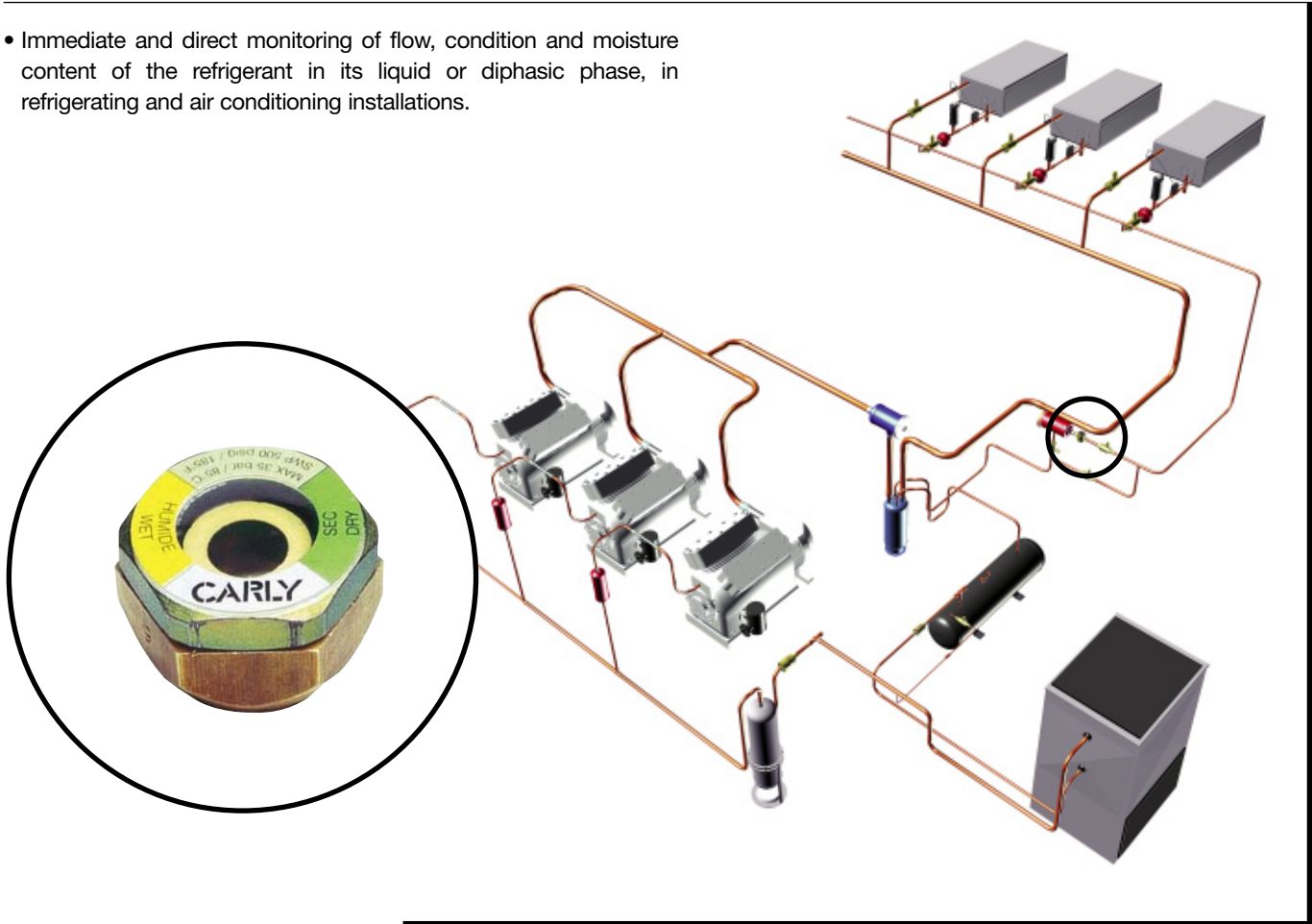
Liquid sight glasses

→ VCYLS

01/10

■ Applications

- Immediate and direct monitoring of flow, condition and moisture content of the refrigerant in its liquid or diphasic phase, in refrigerating and air conditioning installations.



■ Functional features

- Products are compatible with HFCs, HCFCs, CFCs, as well as with their associated oils and additives. Products are designed for use of non-hazardous refrigerants from group 2 of PED 97/23/EC.
- Product classification in CE categories is performed using the PED 97/23/EC table, corresponding to a nominal diameter-based selection.
- Assessment of the refrigerant through the glass.
- A moisture indicator sensitive to moisture and resistant to acids is positioned under glass.
- Moisture presence is characterised by a modification of the indicator colour; this modification is reversible.
- Constitution of the three-part sight glass:
 - one brass base to be brazed directly on piping after drilling.
 - one glass with one moisture indicator, screwed on the base.
 - one PTFE O-ring ensuring air-tightness between the base and the glass.

■ CARLY advantages

- The large size of the glass and the absence of a central hygroscopic tip ensure an excellent visibility.
- The moisture indicator fastening system ensures protection against erosion and prevents fouling by oils and dirt present in the circuit; it also eliminates any turbulence that would hinder proper vision of the refrigerant and does not lead to any pressure drop.
- Room, material and mounting time are saved, compared with the installation of a sight glass fitted to bypass the refrigerating line.
- The brass base and the dichromated zinc-plated steel glass ensure perfect resistance to corrosion.
- The glass is cast in metal which eliminates risks of leak.
- GOST certified product.



Liquid sight glasses

→ VCYLS

01/10

■ Recommendations

- * Assembly is performed on the liquid line between the filter drier and the pressure relief valve.
- * The glass and the O-ring should be removed during the brazing of the base on the piping.
- * After this brazing and when the base temperature is sufficiently low, put the O-ring back into its recess and screw the glass back complying with the recommended 25 N.m tightening torque.
- * The O-ring should be replaced after each removal of the glass.
- * The indication of moisture presence is quick; in return, the moisture indicator indicates return to a normal situation a few hours only after implementation of a drying system (DCY filter drier, or CCY HP/N or PLATINIUM 48 drying cores).
- * General assembly precautions: refer to chapter 115.

READING OF THE MOISTURE INDICATOR

Reminder of acceptable moisture rates expressed in ppm (part per million of water in the refrigerant) : DIN 8949

R22 :	→ 60 ppm
R134a :	→ 50 ppm
R404A :	→ 50 ppm
R507 :	→ 50 ppm
R407C :	→ 50 ppm
R410A :	→ 50 ppm

* Colour: **Green**

Normal conditions, perfectly dried circuit; the filter driers or the drying cores, in the case of replaceable core filter drier shells, are active.

* Colour: **Light green**

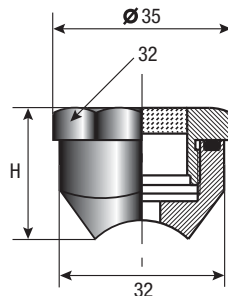
The filter driers or the drying cores, in the case of replaceable core filter drier shells, are saturating. It is necessary to quickly replace them.

* Colour: **Yellow**

The filter driers or drying cores, in the case of replaceable core filter drier shells, are entirely saturated. There is a possibility of danger, the circuit is humid and polluted; immediate intervention is required: quickly install new **DCY** sealed anti-acid filter driers or new **CCY HP / N** or **PLATINIUM 48** filtering and drying cores.

■ Technical features

CARLY references	For soldering onto the pipe :		Dimensions	Net weight (kg)
	Ø (inch)	Ø (mm)	H (mm)	
VCYLS 5	5/8	16	22,0	0,1
VCYLS 7	7/8	22	21,5	0,1
VCYLS 9	1 1/8	28	20,0	0,1
VCYLS 11	1 3/8	35	19,0	0,1
VCYLS 13	1 5/8	42	18,5	0,1
VCYLS 17	2 1/8	54	17,8	0,1
VCYLS 21	2 5/8	67	17,2	0,1





Liquid sight glasses

→ VCYLS

01/10

■ Technical features

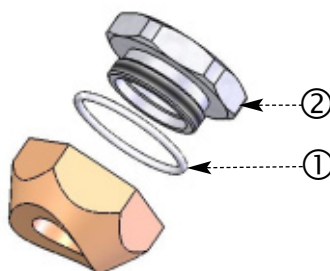
CARLY references	Maximal working pressure	Working pressure ⁽¹⁾	Maximal working temperature	Minimal working temperature	Working temperature ⁽¹⁾	CE Category ⁽²⁾
	PS (bar)	PS BT (bar)	TS maxi (°C)	TS mini (°C)	TS BT (°C)	
VCYLS 5	42	10	80	-40	-20	Art3§3
VCYLS 7	42	10	80	-40	-20	Art3§3
VCYLS 9	42	10	80	-40	-20	Art3§3
VCYLS 11	42	10	80	-40	-20	Art3§3
VCYLS 13	42	10	80	-40	-20	Art3§3
VCYLS 17	42	10	80	-40	-20	Art3§3
VCYLS 21	42	10	80	-40	-20	Art3§3

⁽¹⁾ The working pressure is limited to the PS BT value when working temperature is lower than or equal to TS BT value.

⁽²⁾ Classification by diameter, according to PED 97/23/EC (refer to chapter 0 page 7).

■ Spare parts

CARLY references	Part N°	Description	Quantity
CY 15552180	1	O-ring for sight glass	1
CY 35012140	2	Glass with moisture indicator	1





DTGB - 7.5-1-1-10

Liquid sight glasses

→ VCYLS

01/10

■ Weights and packaging

CARLY references	Unit weight (kg)		Packaging unit	
	With packaging	Without packaging	standard	OEM'S
VCYLS 5	0,11	0,10	10	/
VCYLS 7	0,11	0,10	10	/
VCYLS 9	0,11	0,10	10	/
VCYLS 11	0,11	0,10	10	/
VCYLS 13	0,11	0,10	10	/
VCYLS 17	0,11	0,10	10	/
VCYLS 21	0,11	0,10	10	/