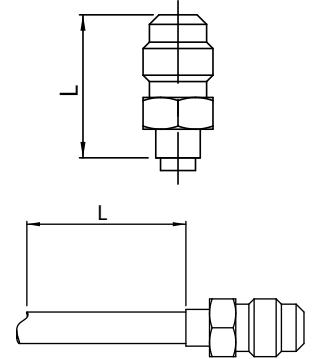


ACCESS FITTINGS AND VALVE-CORES

dimensions and technical description

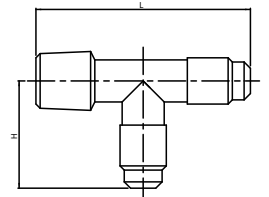
Type	Connections							PS [bar]	Dimensions [mm]		Weight [g]	Pieces per box		
	SAE Flare		NPT	ODS		IDS			L	CH				
	m	f		Ø [in]	Ø [mm]	Ø [in]	Ø [mm]							
FA2-M6	1/4"	-		-	6	-	-	45	26	11	10	100		
FA2-1/4	1/4"	-		1/4"	-	-	-		26	11				
FA2-2M6L50	1/4"	-		-	-	-	6	45	50	11	15	100		
FA2-2M6L90	1/4"	-		-	-	-	6		90	11			20	
FA2-2M6L10	1/4"	-		-	-	-	6		100	11			25	
FA2-M6.8-10	1/4"	-		-	6	-	8	45	30	11	10	100		
FA2-04	1/4"	-		-	-	6	-		26	11			10	
FA2-05	5/16"	-		-	-	-	3/8"		7	27			14	20
FA2-07	5/16"	-		-	-	-	3/8"		6	27			14	20
FA2-M5.1/4-3/8	1/4"	-	-	-	5	1/4"	3/8"	45	26	11	10	100		
FA2-2	1/4"	-	-	-	-	-	-		31	11			15	100
FA2-1/8NPT	1/4"	-	1/8"	-	-	-	-	45	28	11	10	100		
FA2-2NPT	1/4"	-	1/4"	-	-	-	-		33	14			25	100



TEE Type

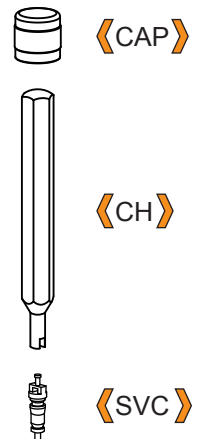
Type	Connections					PS [bar]	Dimensions [mm]				Weight [g]	Pieces per box
	SAE Flare		NPT	IDS			L	CH	D	H		
	m	f		Ø [in]	Ø [mm]							
T22M6IDS	1/4"	-	-	-	6	45	51	-	-	27	35	100
T212	1/4"	-	1/8"	-	-		51	-	-	27	30	
T221	1/4"	-	1/8"	-	-		51	-	-	27	35	
T222	1/4"	-	1/4"	-	-		51	-	-	27	35	

ø 6 IDS Lateral
 1/8" NPT Central
 1/8" NPT Lateral
 1/4" NPT Lateral



Attention : The Valve-core could be mounted on both 1/4" SAE Flare connection

Type	Connections					PS [bar]	TS [°C]		Dimensions [mm]				Weight [g]	Pieces per box
	SAE Flare		NPT	IDS			min	max	L	CH	D	H		
	m	f		Ø [in]	Ø [mm]									
CH	-	-	-	-	-	-	-	-	75	-	-	-	28	10
CAP2	-	1/4"	-	-	-	-	-	-	13	-	-	-	6	100
CAP516	-	5/16"	-	-	-	-	-	-	14	-	-	-	10	
SVCE	-	-	-	-	-	1	-40	+100	-	-	-	-	-	100
SVCI	-	-	-	-	-	2	-20	+100	-	-	-	-	-	
SVCEH	-	-	-	-	-	3	-40	+100	-	-	-	-	-	



1 : SVCE (External spring)

Valve-core for refrigeration systems with following refrigerants:

R11, R12, R22, R123, R134a, R404A, R407C, R410A

PAG+POE permitted

Barrel: Brass CW614N

PIN: Brass CW508L

Outside gasket: PTFE

Inside gasket: CHLOROPREN

Spring: Stainless Steel AISI 302

Opening Pressure: 2+4 bar

Operating Pressure: 0+28 bar

Operating Temperature: -40°C+100°C

Screwing Torque: 0,4+0.5 (Nm)

Max Static Pressure: 40 bar

Peak Temperature: 130°C

2 : SVCI (Internal spring)

Valve-core for refrigeration systems with following refrigerants:

R11, R12, R22, R123, R134a, R404A, R407C,

Barrel + Swivel: Brass CW614N

PIN: Brass QQB 626

Outside gasket: PTFE

Inside gasket: CHLOROPREN

Spring: Stainless Steel AISI 302

Opening Pressure: 2+4 bar

Operating Pressure: 0+30 bar

Operating Temperature: -20°C+100°C

Screwing Torque: 0,30+0.35 (Nm)

Max Static Pressure: 40 bar

Peak Temperature: 125°C

3 : SVCEH (External spring)

Valve-core for refrigeration systems with following refrigerants:

R11, R12, R22, R123, R134a, R404A, R407C, R410A,

R744(CO2) PAG+POE permitted, ideal for high pressure

Barrel + Swivel: Brass CW614N

PIN: Brass CW603N

Outside gasket: CHLOROPREN

Inside gasket: CHLOROPREN

Spring: Stainless Steel AISI 302

Opening Pressure: 2+4 bar

Operating Pressure: 0+60 bar

Operating Temperature: -40°C+100°C

Screwing Torque: 0,4+0.5 Nm

Max Static Pressure: 140 bar

Peak Temperature: 130°C